



LE ZENITH SUD  
BY MONTPELLIER EVENTS

## ZENITH CLUB

---



### A UNIQUE AND INNOVATIVE FORMULA

---

**The Zénith Club** caters perfectly to the technical and logistical needs of today's musical shows with an audience capacity of between 1,000 and 1,800 places.

- > A space perfectly adapted to host concerts and a friendly stage/audience dynamic giving it a "club" atmosphere.
- > A new "all-inclusive" service with a complete sound and lighting system.

Domaine de Grammont - 2733 Avenue Albert Einstein - 34000 Montpellier  
Tel: +33 (0)4 67 64 68 83  
GPS: lat 43.613794 - long 3.930007

ZENITH CLUB



## Capacity

Auditorium	Capacity
Zénith Club Standing	1,800 places, of which 682 are seated
Zénith Club Sitting	1,081 places, seated



## General technical configuration

Dimensions of the structure	70 x 70m	
Floor surface area	4 900m <sup>2</sup>	
Technical ceiling height	12.20m.	
Stage	EASY STAGE	
	16 x 8m	
	Standard height	1.40m
	available height	1.20m to 1.6m.
Possibility to attach equipment	Stage area	20T
	peripheral area	20T
Total installed electrical power	1 400A electrical cabinet in the garden	
	1 400A electrical cabinet in the courtyard	
	2 125A outlets on a courtyard isolation transformer	
	2 32A power supply lines in the garden and courtyard	
Technical access doors	Garden (dressing rooms)	2.50m length x 2.50m height
	middle	5.90m length x 4.50m height
	(technical) courtyard	3.90m length x 4.50m height
	courtyard (facing boiler room)	2.50m length x 3.20m height

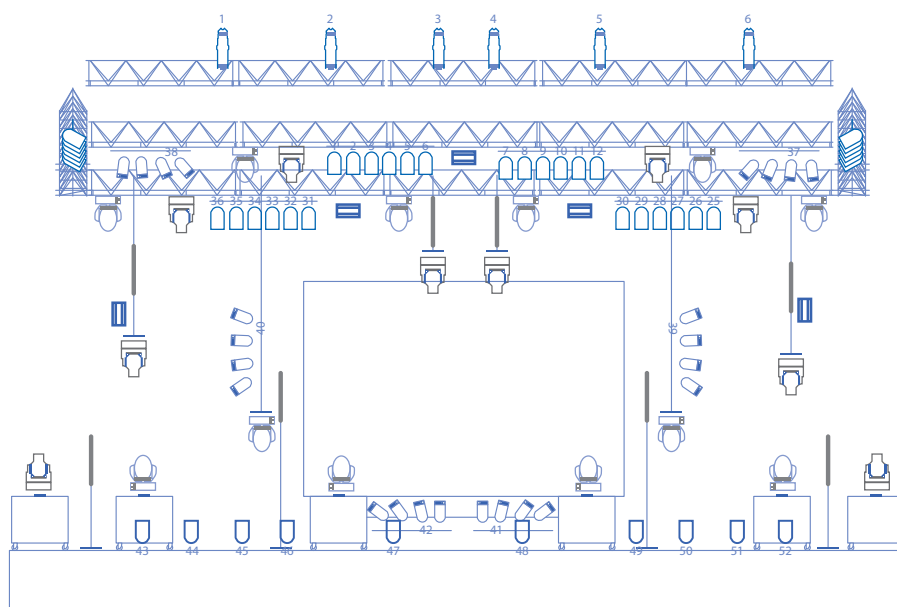


## Control Room

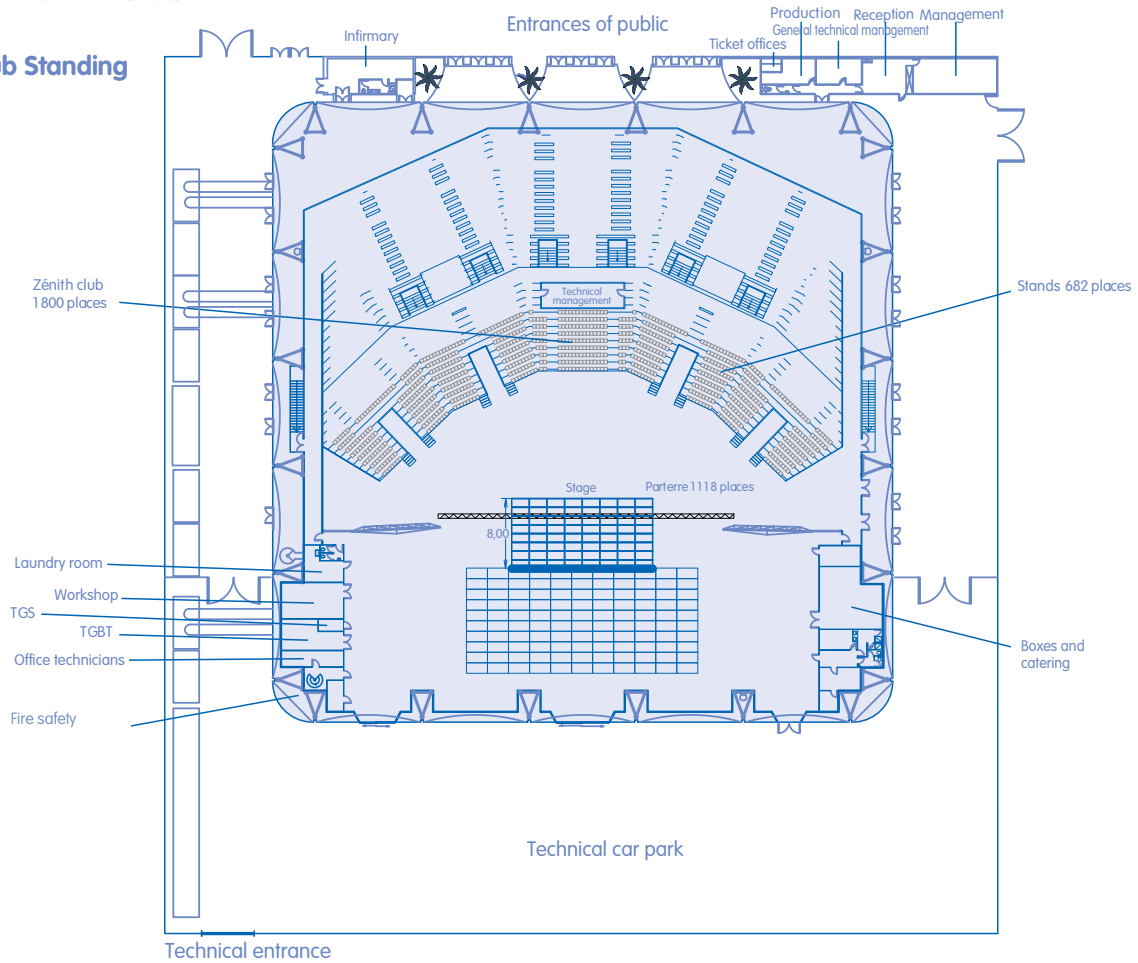
10 x 3m



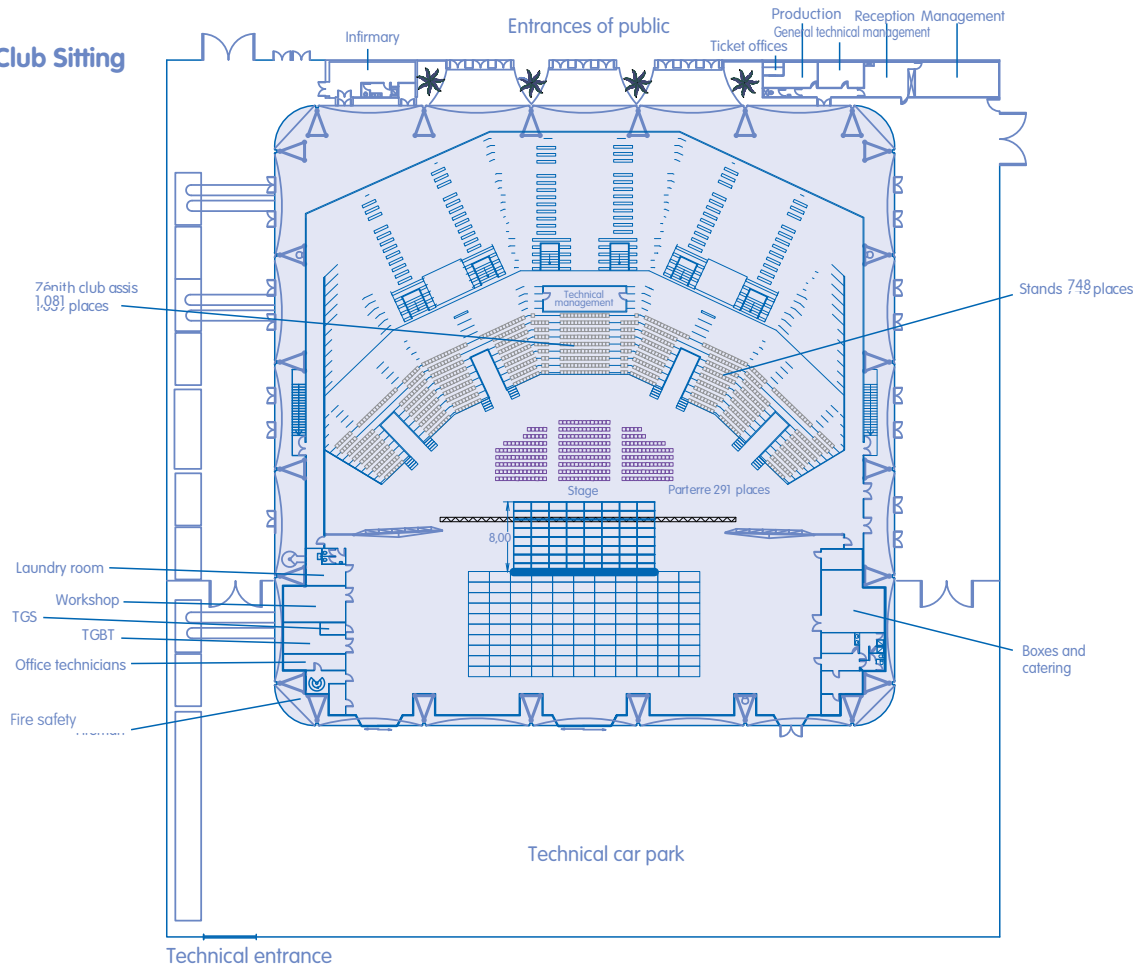
## 850m of technical gangways



## Zénith Club Standing



## Zénith Club Sitting



ZENITH CLUB

## Technical Lighting Sheet



### Moving Lights

- > 12 DTS XR 2000 SPOT CMY.
- > 10 DTS XR 1200 WASH CMY.
- > 8 LED bars.
- > 5 Atomic 3000 Martin.

### Traditional projectors

- > 6 PAR 64 LED bars.
- > 6 half series LCDs.
- > 6 2KW Robert Juliat SX spotlights (iris and gobo holder).
- > 10 PAR solo.
- > 10 PC 2 KW Robert Juliat.

### Dimmers

- > 48 x 2 KW RVE.
- > 24 X 3 KW Robert Juliat.

### Fog machine

- > Viper fan.

### Control Desk

- > Jands Vista T2 plus Wing E2 extension.

### Connecting the control desk and stage

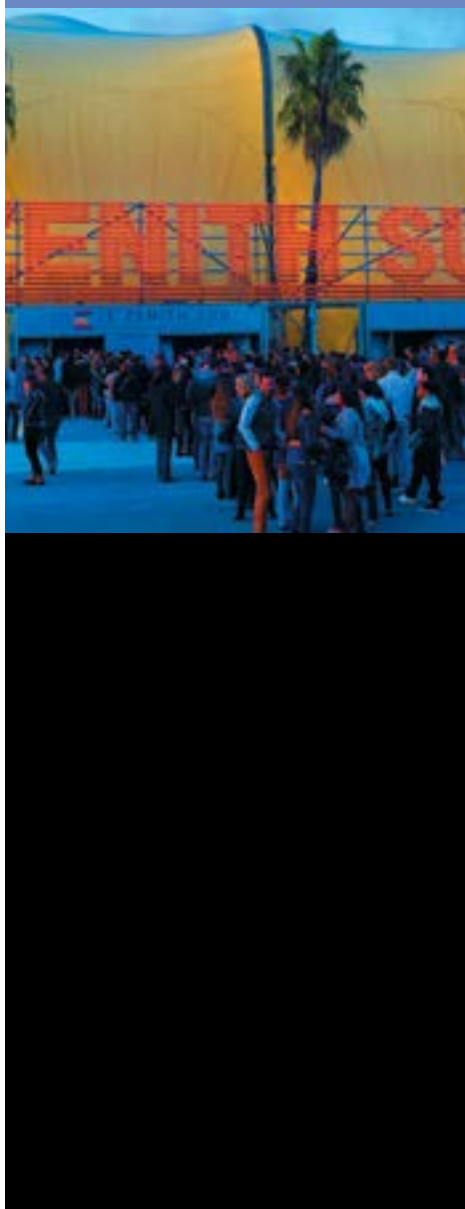
- > 8-universe Ethernet + 1 dmx line.

### Accessories

- > 4 legs for spotlights.



## Sounds Technical Sheet



### Broadcasting

#### L.Acoustic

- > 12 x Kiva
- > 16 x Kilo
- > 12 x SB28
- > 14 x 12 XT
- > 12 x 8XT

### Amplification and filtering

#### L.Acoustic

- > 3 x LA 8

### Front Rack

- > 1 graphic equalizer  
Apex GX 230.
- > 2 Compressors / Dé-esseur  
Limiter BSS DPR 402.
- > 4 analog compressors  
DBX 160 A.
- > 4 Compressors / Limiters  
Noise Gate 2 channel Drawmer  
DL241.
- > 1 Avallon VT 747SP compressor .
- > 1 Noise Gates Klark technics  
Square One.
- > 2 digital reverb processors  
LEXICON PCM96.
- > 1 multi effects processor Yamaha  
spx 2000.
- > 1 TC Electronics M one digital  
multi-effects reverb.
- > 1 digital Delay with effects  
TC Electronics D two.
- > 1 CD player  
Tascam CD-RW 900.

### Broadcast Playback

- > 14 Nexo PS15 speakers  
(10 left and 4 right).

### Playback Amplification

- > 4 LAB gruppen 4 channels c 48  
/ 4.

### Processor

- > 7 PS 15 UTD - CMS

### Mixing board

- > Yamaha M7CL-48

### Microphones

#### Shure

- > 8 x SM58 - 8 x SM57 - 2 x BETA52
- > 3 x BETA98 - 2 x BETA91 - 4 x SM81

#### Sennheiser

- > 4 x E609 - 6 x E604 - 4 x MD421

#### 1 Neumann

- > KM184 Stereo Set

#### Direct Input Boxes

- > 12 active DI BBS AR133

#### Front-panel connection

- > Analog 48 / 8 + Ethersound  
AMIX SNA 50-2 sound limiter  
(live) on the system.

#### Front-panel connection

- > Analog 48/8 + Ethersound.

#### Sound limiter

- > AMIX SNA 50-2 (live) on the  
system.